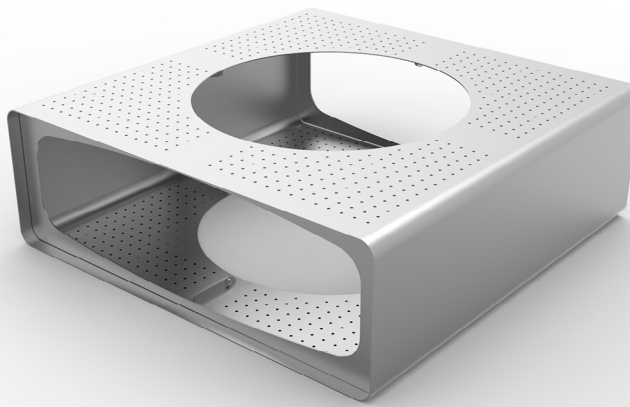


pindo

FICHA TÉCNICA





ESPECIFICACIONES

VARIANTES DISPONIBLES

Plano
Banco

MATERIALES

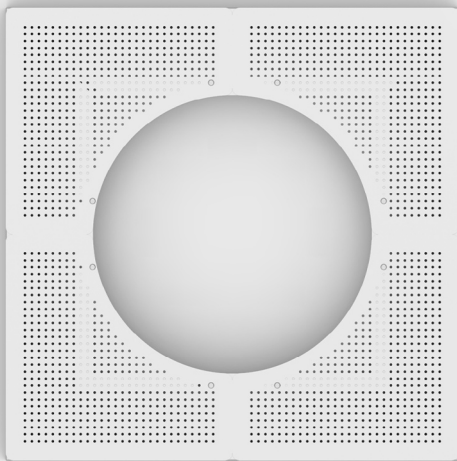
Chapa
Chapa perforada (espesor 4,75 mm)

TERMINACIONES DISPONIBLES

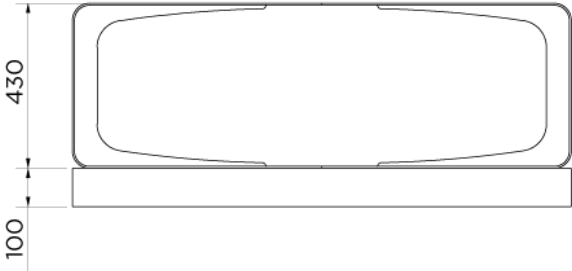
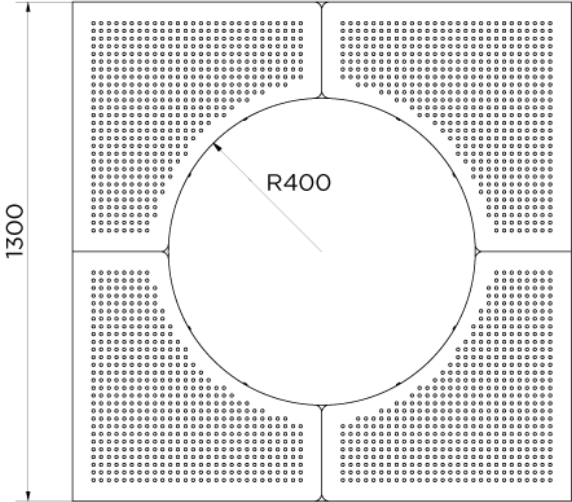
Pintura poliéster termoconvertible

SISTEMAS DE FIJACIÓN

Empotrado al piso



MEDIDAS



NOMEN ARGENTINA

Eduardo Sivori 5170 [B1605AV]
Munro - BsAs - Argentina
Tel +54 11 4721 3750

NOMEN BRASIL

Av. Dr. João Batista de Almeida Barbosa, nº622
São João da Boa Vista - SP - CEP: 13876-021
Tel/Fax +55 19 3624 1413 | Cel +55 19 97403 8177

NOMEN MEXICO

Jorge Jimenez Cantu N° 230 D-14
Edo - Mex - CP 54750
Tel 5868 9680 - 5873 8414 | Fax 1113 0691

